

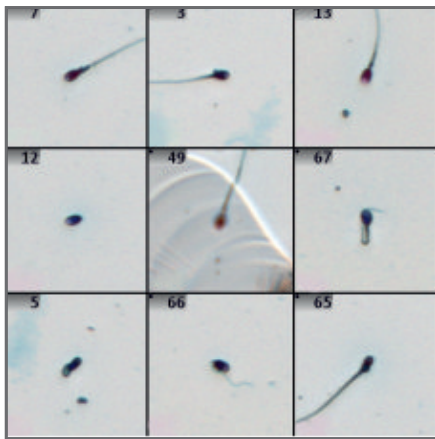
A microscopic image of sperm cells stained with a blue dye. Two large, irregularly shaped sperm heads are visible, each containing two dark red spots. A red rectangular box highlights a smaller sperm cell between the two larger ones. The background is a light, textured surface with some small dark specks.

# DNN Based Sperm Finding

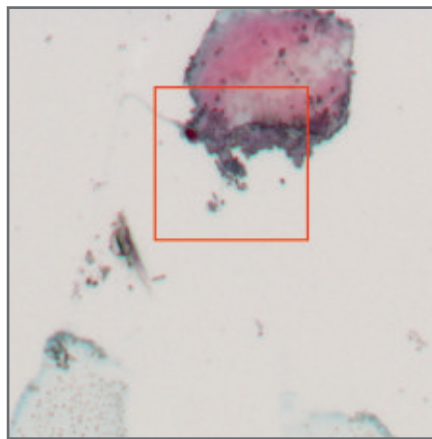
Artificial Intelligence  
for Automated  
Forensic Sperm  
Detection

# FORENSICS

# INTELLIGENT FORENSIC SPERM DETECTION



Gallery of detected sperms in Metafer



Metafer detecting difficult sperm

Sperm cell detection is a widely used forensic analysis tool in the investigation of sexual assault crimes. Manual detection of sperm cells in a sample can be tedious and complex, leading to potential errors. Due to the nature of forensics, sample degradation and variability is unavoidable. Automated sperm detection is, therefore, one of the most efficient ways to rapidly identify the presence of sperm.

MetaSystems has developed a new **Deep Neural Network (DNN)** algorithm, trained with thousands of pre-classified data, which brings the advantages of Artificial Intelligence into the automated sperm detection domain. Using the DNN algorithm, MetaSystems' Metafer can detect even the most elusive sperm.

## Metafer Sperm Finder supports:

- **Automated detection** of even the most degraded and variable sperm in transmitted light from 'Christmas Tree'-stained (Nuclear Fast Red/Picro-indigocarmine) specimens
- Full slide scan in **less than 15 minutes** (with our Cool Cube 4c)
- **Up to 800** slides automated scan, with MetaSystems **SlideFeeder x80**
- Easy review of results
- Simple and efficient transfer of object coordinates to laser micro-dissection systems
- Upgrade path to fluorescence
- Fully **GLP - compliant documentation**

### Note

For Research Use Only (RUO).  
Metafer for sperm finding is not intended for diagnostic use.

# FORENSICS





**MAGAZINES**

Metafer's slide frame magazines hold 16 frames with 5 slides each (80 slides in total). A fully equipped SlideFeeder x80 hosts 10 magazines plus one bar code reader.

Each magazine is portable and can easily be taken to the work-bench for loading.

**FEEDER MODULE**

The rotating module of the SlideFeeder x80 delivers the slide frames to the motorized stage of Metafer.

The device runs unattended and is prepared for 24/7 operation - including intelligent priority sample handling.

**AUTOOILER**

If the current workflow requires the use of an immersion oil objective, the automated oil dispensing device is engaged.

Detailed sample dependent macros control optimal oil dispersal for each sample.



### CAMERAS

MetaSystems CoolCube cameras are designed with excellent imaging and automation in mind.

These provide seamless automated integration with Metafer enabling optimal performance.

### MICROSCOPE

High precision research grade fully motorized microscope equipped with a stepping motor stage enables found objects to be precisely recorded and relocated.

**Objective:** 20x

**Light:** Transmitted Light


### SOFTWARE

The PC based Metafer software controls the scanning hardware and provides a convenient user interface prepared for all-day, routine use. Thanks to the exceptional classifier concept each Metafer provides the optimal balance between flexibility and standardization.





**MetaSystems**



Innovative Solutions for  
Automated Imaging

**EUROPE & RUSSIA**

**Germany**, Altlussheim  
info@metasystems-international.com

**Italy**, Milan  
info@metasystems-italy.com

**Russia**, Moscow  
info@metasystems.su

**AMERICA**

**USA**, Medford  
info@metasystems.org

**Argentina**, Buenos Aires  
info@metasystems-latam.com

**ASIA**

**China**, Hong Kong  
info@metasystems-asia.com

**China**, Taizhou  
info@metasystems-china.com

**India**, Bangalore  
info@metasystems-india.com



**CONTACT**



info@metasystems-international.com  
www.metasystems-international.com

